

Newsletter

July 2025

NEWS, AGRI ADVICE AND PROMOTIONS



Retirement after 46 years of service

Congratulations to our electrician Donal Keating on his recent retirement from the Co-op. Donal has served the Co-op and its milk suppliers for 46 years. He joined Barryroe in 1979, having trained as an electrician, specialising in refrigeration. He was to the forefront of the Co-op's campaign to move its suppliers from churns to refrigerated bulk tanks in the early 1980s. This transition was 100% complete by 1984.

Since then, Donal has provided a top-class electrical service for the co-op's loyal

customer base. Furthermore, within the Co-op itself, he has ensured the smooth running of its internal equipment, and in particular, oversaw the whole grain drying process after harvest each year.

Donal is not stepping out of the farming world entirely. He is taking up a role with Rea Refrigeration. This company specialises in the servicing and repair of all major bulk tank brands and wash units and is also a supplier of bulk tanks and on-farm heat recovery units.

Milk solid booster nut – performance review of trials

Barryroe Co-op has been trialling a milk solid booster nut since January. The booster package is made up of amino acids including lysine which specifically targets butterfat and protein percentages in milk. With over 18% of our suppliers using the milk solid booster nut this year, performance has been measured with the following results established:

1. Over the first 6 months of the year, herds feeding the milk solid booster for 3 months at the correct rate, kilos of milk solids rose by 8%, while showing a return on investment of 2.5:1.
2. Not all herds saw this rise but feeding rate and length of time feeding the product impacted on their results.
3. One herd had a 6:1 return on investment making an additional €25,000 net profit for the first half of the year.

Important points to note:

- Depending on cow health and milk

production, 50% of herds didn't see a significant difference until 100 days on the product.

- It became very apparent that the correct feeding rate along with a minimum of 100 days on the product proved to show the best results.
- All herds who stayed on it for a 100-day period saw no butterfat depression this year.
- Herds with lower solids saw improved results in 60 days of going onto the product.
- There is no perfect time to go onto this product but the earlier the season, the faster payback is.

We will continue monitoring farms using the product and complete a full year summary of 2025 in December. If you are interested in making more margin and increasing milk solids, please contact your local feed representative.

NEWS WATCH

MILK SUPPLY AND PRICE

June milk supply amounted to 11,564,008 litres which was a 2% increase on June 2024. There was no change to the base price of milk which remains at 49.65 c/L. Barryroe is paying €8.6457 per kg of protein and €5.7638 per kg of butterfat. Our average constituents for the month are 3.50% protein 4.09% butterfat and our average price paid is 54.40 c/L, including 0.5 c/L SCC bonus and VAT @5.1%.

NATURE-BASED SOLUTIONS TO PROTECT WATER QUALITY

Since the launch of the Farming for Water EIP (European Innovation Partnership) last year, Carbery has seen significant interest in the nature-based solution actions available for funding to improve and protect water quality from nutrient losses on farms.

Nature-based solutions involve the deliberate use of ecosystem services to reduce the amount of potentially harmful nutrients leaving farms and impacting waterbodies. One common issue is "grey water" from farmyards, which can carry phosphorus and nitrate when diverted away from storage facilities into farm drainage systems.

To learn more, the contacts in Carbery are Ronan Kennedy 087 4380840, and Liam Bohane 087 4312007. You can also see a demonstration of a nature-based solution in action at the farm walk of Carbery award winner Glenn Forde, on July 25th.

FARM WALK – 25TH JULY @11AM

On the farm of Carbery's 2024 overall milk quality award winners, Glenn Forde & family, Ballinadee, Bandon P72 YW59. All are welcome.

HISTORICAL TALKS ON BARRYROE CO-OP

- Courtmacsherry Festival, July 28
- Timoleague Festival, August 18

Guest speakers will include Philip O'Regan who is a former deputy editor and digital editor of the Southern Star newspaper. Philip has an MA in Local History and is currently writing a history of Barryroe Co-op.



JULY OFFERS



**SAVE
€20**

Animec Pour -On 5Ltr



**Platinum Medicine store
ONLY €169**



**PROTEKK 15 LITRE BATTERY SPRAYER
ONLY €99**



**PROTEKK RATCHET STRAP
10MTR X 5TON
BUY 2 FOR €29.95**



**FARMSTOKK SOLAR FENCER S4200
ONLY €549**



**Spotinor 2.5Ltr
ONLY €129**



**KARCHER K5 CLASSIC
PRESSURE WASHER
ONLY €299**



**Animec Super 500ml Injection
BUY 2 SAVE €50**



**Snickers Workwear
10% OFF ALL PRODUCTS**



**10%
OFF**

**FARMSTOKK 100 BUCKET
SCREW IN INSULATOR**

**BARRYROE CO-OP HAVE RECENTLY
BEEN APPOINTED AGENTS FOR
HOBBYWELD RENT FREE GAS
BOTTLES**

(Hobbyweld 5/15, Pure Argon, Oxygen
and Hobbybrew are now In stock in
Central & Ballinspittle)





WHAT IS IT?

The Farming for Water EIP is an AGRI-Environmental Programme designed to improve Water Quality by Grant Aiding above and beyond Water Quality measures.

HOW DOES IT WORK?

ASSAP Assessment

Suppliers must have or must complete an ASSAP Assessment this is called the Rainwater Management Plan and this is worth €250. This is the only mandatory measure.

Farm Action Plan

The ASSAP Advisor will go through the measures that are most applicable to your farm.

Payments and Actions

The ASSAP Advisor will submit your application to the EIP team and they should have your application approved within 4-8 weeks and you will be paid according to each measure being implemented. Failure to not complete measure will result in non-payment

BASIC MEASURES AVAILABLE

- €250 annual payment for completing N Surplus calculation.
- €156 for completing a training course.
- Slurry testing.
- 50% off bucket brush. (Max 50% of €4000)

OTHER MEASURES AVAILABLE

- Fencing Watercourses 1.5 metres (Available to derogation farmers)
- Bridges and Culverts
- Cover Crops
- Settlement Tank
- Willow Filter beds (Filtering grey water)
- Water Troughs (Only for non-derogation farmers)
- Riparian Margins
- Critical Source Area (Payment to not feed peaty land over winter period that may be grazed in summer months.
- Bunded Drains.
- Swales

CONTACT

Liam Bohane
Phone: (087)4312007
Email: LBohane@carbery.com

Ronan Kennedy
Phone: (087)4380840
Email: RKennedy@carbery.com





ONLY
€1.50
+ 25c Deposit

Mi Wadi Fruit Squash Range
1lt €1.50 per lt



ONLY
HALF PRICE
€5.32

Kenco Millicano Tin
100g €53.20 per kg



ONLY
€3

Denny Gold Medal Pork Sausages
340g €8.82 per kg



ONLY
€8.99
EACH
See in store for details

Ariel Original All-in-1 Pods | Fairy Non Bio Pods for Sensitive Skin | Bold 2 In 1 Spring Awakening Pods 33 Wash See in store for details



ONLY
€1.75

Johnson's Baby Cotton Buds
200's See in store for details



ONLY
€4.99

Kellogg's Rice Krispies 660g €7.56 per kg | **Coco Pops 650g** €7.68 per kg



ONLY
€4.50

Lynx Anti Perspirant/Body Spray Range 250ml €18 per lt



ONLY
€3

Dr. Oetker Ristorante Pizza Range
Various See in store for details



ONLY
€6

Nescafé Azera Americano
90g €66.67 per kg



ONLY
€3.50

Regina House Hold Towel XXL
2 Roll €1.75 per roll



ONLY
€3

Mars/ Snickers/ Twix Bars
4 Pack See in store for details



ONLY
€3.25

Tropicana Juice Range
850ml /900ml See in store for details



ANY 2 FOR
€2

Müller Rice/Corners Range
Various See in store for details



ONLY
€6
See in store for details

Comfort Scent Booster Range 20 Wash See in store for details



ONLY
€4.50

Flora ProActiv Light Spread
450g €10 per kg



ONLY
€2.50

Ben's Original Ready To Heat Rice Range
220g €11.36 per kg



ONLY
€2.50

Dolmio Sauce for Bolognese Range
450g €5.56 per kg



ONLY
€1.50

SPAR Granulated Sugar
1kg €1.50 per kg

PET CARE



ONLY
€1.50

Pedigree Rodeo Dog Treats with Beef
4 Pack 4x70g €5.36 per kg



ONLY
€7.50
EACH

Go-Cat Cat Food Range
2kg €3.75 per kg



ONLY
€1.50
EACH

Bakers Dog Treats Bacon & Cheese Whirlers 130g/ Bacon Sizzlers 90g/Rewards Variety 100g
See in store for details



CHARITY PROGRAMME



NATIONAL BREAST CANCER
RESEARCH INSTITUTE

SO FAR
WE HAVE RAISED

€574,014

THANK YOU FOR
YOUR SUPPORT

For more information, visit breastcancerresearch.ie



CHOOSE FROM OUR SPAR RANGE AND SUPPORT THE NBCRI
We donate 10c on SPAR bottled water and 1c on selected SPAR Range products

Registered Charity Number (RCN): 20025175



ONLY
€6

Keogh's Queens Irish Potatoes
(New Season) 5kg €1.20 per kg



ONLY
€3.20

Fairy Washing Up Liquid Original/
Lemon 654ml €4.89 per lt



ONLY
€1
EACH

Fresh Choice Market Cherry Tomatoes 250g/Baby Gem Lettuce/
Scallions/Cucumber | Keogh's Baby Potatoes 750g
See in store for details



ONLY
€2

Onken Yogurt Range
450g €4.44 per kg



ONLY
€2

Biscoff Biscuits Range
Various See in store for details



ONLY
€2.75

Sanex Shower Gel Range
450ml €6.11 per lt



ONLY
€3.99

Hellmann's Light/ Real Mayonnaise
600g €6.65 per kg



ONLY
€2

Baker Street Burger Buns Seeded/Plain 6
Pack 300g €6.67 per kg | Hot Dog Rolls 4
Pack 250g €8 per kg

BEER 8 PACKS ONLY €15 EACH



Guinness/Carlsberg/Budweiser/Rockshore Lager/Apple Cider 8 Pack 8x500ml €3.75 per lt



ONLY
€16.99

Jameson Whiskey 350ml €33.98 per 70cl



ONLY
€8.99
EACH

Via Firenze Chianti DOCG/Pinot Grigio
750ml €8.99 per 75cl

Summer Sparkle!



ONLY
€9.99
EACH

Vini Dei Cardinali Prosecco
750ml €9.99 per 75cl



ONLY
€10.99
EACH

Emotivo Prosecco Frizzante
750ml €10.99 per 75cl



ONLY
€15.99

Arzeri Prosecco
750ml €15.99 per 75cl



ONLY
€16.99

Aperol Aperitivo
700ml €16.99 per 70cl



ONLY €18 EACH

Corona Ligera/Extra | Leff Blonde 12x330ml €4.55 per lt | Budweiser 12x300ml €5 per lt

Prices correct at the time of going to print. Offers available from 31st July to 20th August 2025, unless otherwise stated.
Customer quotas may apply. All savings shown are versus recommended retail price.

Darrara farmers were the first to join their Barryroe counterparts with a separating station opening there in 1926

In its initial few years, Barryroe Co-op devoted its energies to the expanding of its milk supply, bearing in mind that without a sufficient supply a modern creamery equipped with an expensive plant could not justify its existence. To increase its milk supply, it was necessary to go outside the central area.

From early in 1926, the committee planned to open an auxiliary creamery in the Darrara area. This was a strategic decision because as well as increasing the milk pool substantially, it also secured the area between Barryroe and Clonakilty and closed it off to competition from other creameries.

Having looked at several sites, two were deemed suitable, both on the land of Mr John (Jack) O'Brien and quite close to each other. Eventually, on the advice of co-operative organiser, James Fant, the committee selected a site in the townland of Ballinroher, about 300 yards from Clashfluic crossroads.

A survey of the Darrara area indicated that 450 cows were pledged to supply milk to the new auxiliary and that should increase to



Darrara branch photo thanks to Gearóid Holland.

600 in the course of time. As had been the case in Lislevane, local volunteers did much of the work clearing the site and drawing sand and gravel to the site at Ballinroher.

The machinery was installed by the Irish Agricultural Wholesale Society Ltd. The

auxiliary opened at the end of August 1926. Initially, milk intake was slow, at about 450 gallons per day, but it grew gradually. The branch was referred to in almost equal measure as Darrara or Clashfluic, even though it is actually in the townland of Ballinroher.

An adequate and consistent supply of water was needed to operate a separating station

Unusually, the creamery at Darrara was not built at a crossroads and neither was there a stream or a river at the site. The most important thing for a separating station was a proper water supply. The supply for Darrara came from a spring situated in an elevated field across the road from the building. This spring provided a more than adequate and consistent supply of water. The water was

pumped from the spring into a raised water tank which was at the same level as the tank in the separating station. Gravity did the rest as the water flowed freely from tank to tank.

Initially, there was just a separating station at Darrara. Some years later a coal store was added and later again a store for selling farm produce. It was the early 1950s

before a shop for selling grocery items and provisions was provided.

At the peak of the life of the creamery, there was around 80 milk suppliers. In recent decades however, following farmer retirements and farmland consolidation, the Darrara area has followed the national trend, towards fewer farmers with larger holdings. It now has just 23 active milk suppliers, though the herd-sizes are much larger than in previous decades.

The interaction between the farmer and the Co-op branch has also changed dramatically; Co-op trucks now collect the milk, and Co-op trucks deliver animal-feed and fertilisers directly to farmyards. This major change started in the early 1970s with the introduction of bulk tanks. In 1972, separating ceased at Darrara, (and in the Kilbrittain branch also), while the Timoleague branch closed entirely. Darrara now became a milk collection depot only for a period.

This again changed in the following decade, when churns were totally replaced by refrigerated bulk tanks. Co-op milk trucks collected and delivered directly to the Carbery milk processing plant in Ballineen, thereby taking the branch out of the milk collection chain. While previously, Darrara needed two workers employed, now it could be managed by one.



Kevin Finn, left, whose family supplied milk to Darrara from the day it opened, and Sean Whelton, current Darrara branch manager.

CENTENARY FEATURE: The longest serving Darrara branch manager

Denis O'Leary retired in 2002 having worked in the branch for 52 years, most of it as branch manager. This was an extraordinary period of service by any standards. Denis lived in Ballinroher, just up the road from the branch.

Batty Hennessy from Timoleague also served at the branch for many years. When the Timoleague branch closed, two of its staff John Hallinan and John (Jackie) Cullinane, worked at Darrara for a period. Some alternated between Darrara and the grain stores in Timoleague.

After Denis O'leary retired in 2002, Gerry McCarthy managed the branch for one year, and then the current manager, Sean Whelton took over in March 2003.

Others who worked there taking in milk over the years were Willie O'Mahony, Denis Sexton, Denis O'Mahony, Brendan O'Sullivan and Gus O'Brien. Many staff worked at Darrara for brief periods as they could be rostered between the central and the other four branches as the occasion demanded.



Retirement function at Darrara Community Centre for Denis O'Leary, branch manager, back, from left, Jerry Keohane, Seán Griffin, Pius Lyons and Kevin Finn. Front, Peter Dineen, general manager, Barryroe Co-op; Buntty O'Leary, Denis O'Leary, and Donal Keohane.



Batty Hennessy, Darrara gave many years of service to the branch. For many years, Batty and his wife Margaret (McCarthy) ran a boarding house and an eating house at Abbey Street, Timoleague. It was a popular boarding house for staff of Barryroe who came from outside the area to work in the Co-op. Batty was appointed engine man at Darrara in 1940 and gave many years in various capacities. His son, John, also worked taking in milk at Central for a short while. John's wife, Mary Connolly, who was originally from Tipperary, came to Barryroe as a butter maker and it was there that the couple met, marrying in 1955.



Willy Finn was the first of our four Co-op chief financial officers in the past century

Willy Finn was educated in Butlerstown national school, Farranferris secondary school, and UCC. In 1937 he took up a role as creamery manager with Barryroe, working in several of the Co-op's branches.

He was subsequently transferred to head office in Lisleavane where he was appointed Office Manager. Prior to this, the Co-op General Manager, Maurice Collins, supervised the accounts and administration function himself, but the Co-op had grown to such an extent that a full-time finance manager was now needed.

Willy Finn was succeeded by Brendan O'Sullivan. Brendan had started in the Co-op in 1971, initially employed as a branch manager, before being moved to the accounts office. He was subsequently appointed as head of finance in 1976.

Brendan left the Co-op in 1986, and the chief financial officer role went to Vincent O'Donovan, who had worked in the accounts office for the previous decade. In 2000, Vincent left the Co-op and Stephen O'Leary was appointed to the role.



Willie Finn, 1937-1976



Brendan O'Sullivan, 1971-1986



Vincent O'Donovan, 1976-2000



Stephen O'Leary, 2000-current

CENTENARY FEATURE: Providing a top-class agricultural advisory service has been a priority for Barryroe Co-op

Michael Coppinger, 1953 to 1959: This appointment in 1953 was the first of its kind by a Co-op in Ireland. In the Barryroe Co-op annals, this advisory service is credited with transforming the area into one of the premier milk producing districts in the country. The arrival of this advisory service coincided with the Co-op making major strides in several areas, including the setting up a soil-testing station, an artificial insemination service, a pig breeding and testing station, and a grain-seed assembly scheme.

Towards the end of 1959, Michael Coppinger moved on to take up a position as Sales Manager with Gouldings. In his seven years with the co-op, he is credited with having greatly improved farming practices. He created a template for others to follow and left a rich legacy in the area when he departed.

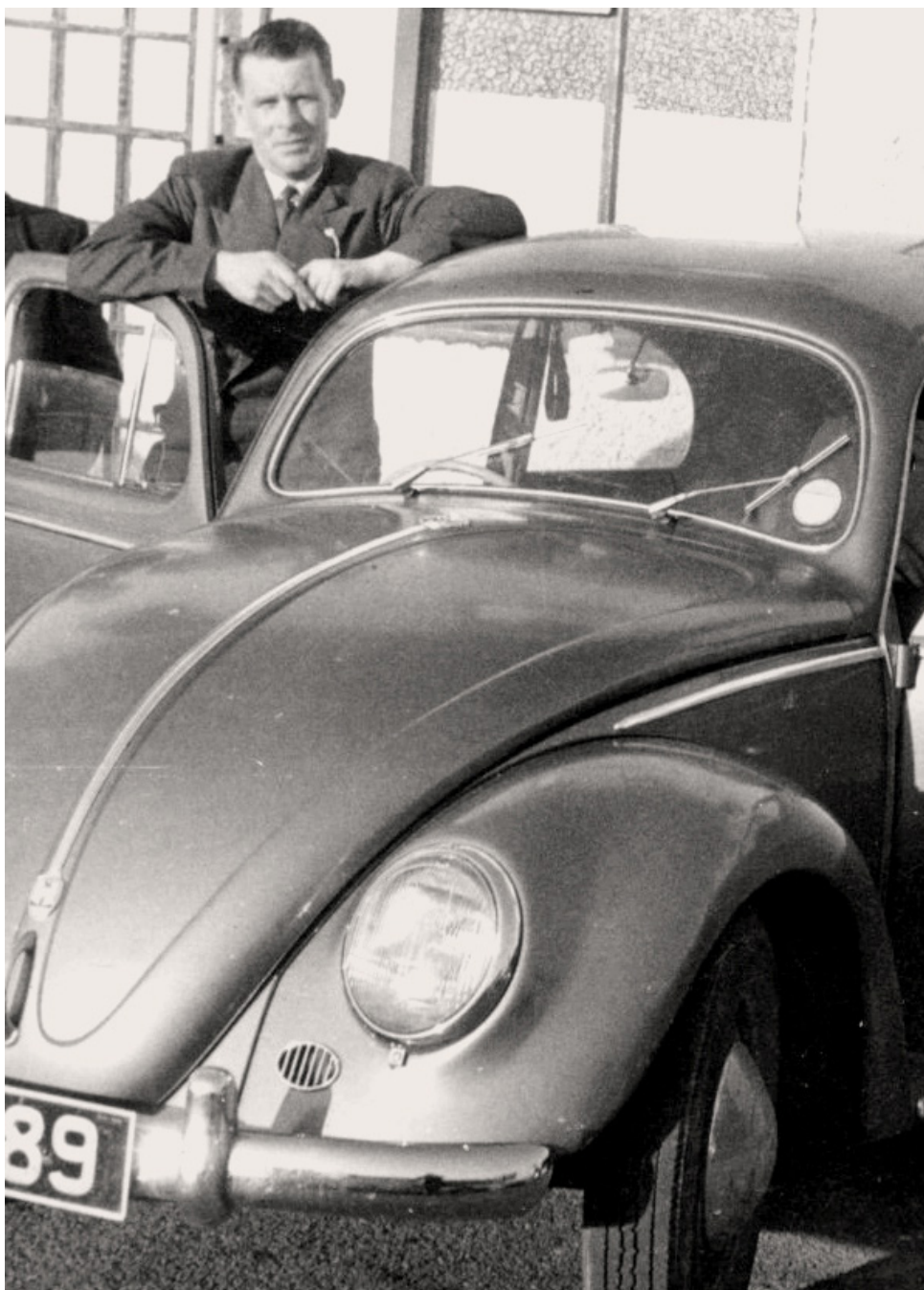
Profile: John Sheehy, agricultural advisor, 1960 to 1965: In 1960, Barryroe appointed John, a native of Skibbereen, to replace Michael Coppinger. John was educated at St. Fachtna's High School, Skibbereen, and spent a year at Darrara Agricultural College. He studied for two years at UCC, and at Albert College, Glasnevin, where he received his B.Agr.Sc in 1959.

John spent five years in Barryroe and contributed greatly to the work of improving farm practices, that had begun by Michael Coppinger. They are both remembered for their expert and pioneering work.

John left Barryroe to take up an appointment with the ACC Bank where he went on to become Regional Manager. John was a noted breeder of cattle and a most successful exhibitor at shows, from the RDS down. He and his wife Breda took great pride in their pedigree Hereford herd.

Teagasc weekly clinics; From the 1970s onwards, Teagasc, the national body for agricultural research, advice and training, and its predecessor ACOT, provided a weekly clinic for farmers. Operating from the Co-op boardroom, it was manned by some excellent Teagasc staff over the years including Dermot O'Mahony, Tom Fleming, Eugene Hayes and Anne Malone.

For a period, the Co-op must have felt that this state-run advisory service was sufficient as it did not employ its own full time agri-advisor. From 1996 onwards however, it again decided to employ its own advisor. In fact, with the ever-increasing regulations and environmental concerns, it decided to employ a second advisor from 2008 onwards. Things have progressed further in the last decade as the demands for expertise increase and our current service is



Michael Coppinger 1953-1959

headed by David Walsh, who is supported by Amanda Cussen and David Nyhan. Over the past thirty years, the Co-op has had some outstanding candidates as head of this agri-advisory service, including:

- Liam Phelan 1996-1997
- Donal Buckley 1998-2000
- Seamus O'Mahony 2000-2013
- Jamie Curtin 2008-2016
- Scott Lovell 2016-2020
- David Walsh 2018-current



John Sheehy
1960-1965



Seamus O'Mahony
2000-2013



Jamie Curtin
2008-2016



Scott Lovell
2016-2020



David Walsh
2018-current